

E94A 2-Port

ExpressCard

User's Manual

Table of contents

Overview	3
System Requirements	3
Features.....	4
Hardware Installation.....	4
Software Installation	5
Windows 2000/XP/2003 Installation.....	5
Setup Diagnostics	5
Specifications	7

Overview

The E94A is a 1394a/FireWire Host Adapter for Multimedia Application, which is specifically designed to plug into a desktop or laptop equipped with an ExpressCard slot. The E94A also provide 1394a/FireWire functionality to your legacy Windows, Linux or Mac machine with a simple ExpressCard 1394/FireWire adapter you plug into an available ExpressCard slot.

The E94A are two external 1394a/FireWire ports that can support dozens of 1394a/FireWire devices like video cameras, hard drives, and CDR-W devices and a single ExpressCard Port that will allow you to plug into a desktop or laptop equipped with ExpressCard slot .

The E94A supports up to 63 devices chained together and multimedia isochronous application (Audio and video applications require a guaranteed isochronous delivery of data to prevent delayed or out-of-order frames. 1394a/FireWire did that, and did it better than USB 2.0) .



Figure1: Front Panel

System Requirements

- ◆ Notebook computer with one available ExpressCard slot.
- ◆ ExpressCard compliant Card Services and Socket Services.
- ◆ Windows 2000 or later.

Features

- ◆ Compliant with ExpressCard standard
- ◆ Fully compliant with PCI Express V1.0a
- ◆ Fully compliant with IEEE1394-1995
- ◆ Fully compliant with IEEE std 1394a-2000
- ◆ Fully compliant with 1394 OHCI V1.1
- ◆ TI 1394a OHCI with 2 port PHY controller
- ◆ Two 1394a/FireWire up to 400Mbps port
- ◆ Data Transfer Rate up to 2.5Gbps ExpressCard link speed and up to 400Mbps IEEE1394a / FireWire transfer rate
- ◆ Hot-swapping feature allows you to connect/detach devices without turning system off

Hardware Installation

This chapter describes how to install the E94A ExpressCard to your computer.

When you connect the E94A card to the PCI-Express Slot, the PC Card has the ability of automatic sensing and operating on either speed without manual reconfiguration.

1. Hold the ExpressCard with wide connector toward the slot and the brand label facing upward.
2. Insert the ExpressCard and push it firmly into the ExpressCard slot of your computer.

 **Note:**

1394a 2-Port ExpressCard does not provide any bus – power for 1394a ports. You will need to have a power adapter if your 1394a devices require bus-power. Please refer to the DC power adapter if you need to buy one.

Input: AC 100-240V, 50/60Hz, 1.0A (Max.)

Output: DC 12V, 1.0A (Max.)

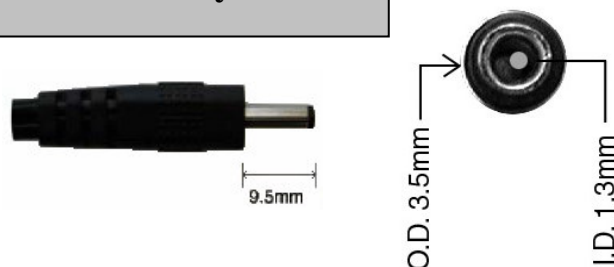


Figure2: Power Adapter

Software Installation

Windows 2000/XP/2003 Installation

Windows 2000, XP and Server 2003 automatically detects and installs the correct driver for the E94A ExpressCard. No driver installation is needed, but in first time ,after the new 1394 device is detected and finish the installation automatically maybe to restart your system.

Setup Diagnostics

To verify if the device exists in your computer and is enabled, go to **Start → Control Panel → System → Hardware → Device Manager**. If “1394 Net Adapter” is found in <Network adapters>, and “Texas Instruments OHCI Compliant IEEE 1394 Host Controller” is found in <IEEE 1394 Bus host controllers> or be named as <1394 Bus controllers > , it means your device is properly installed and enabled.

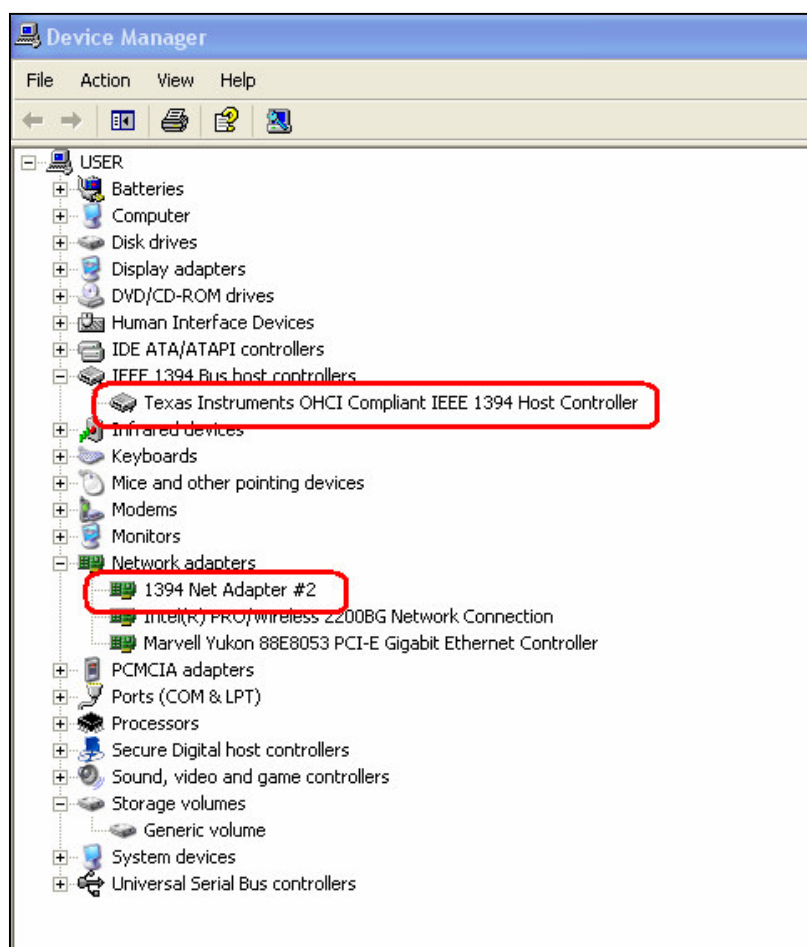


Figure3: 1394 Net Adapter

After you open Network Connections, you can find a new 1394 connection .

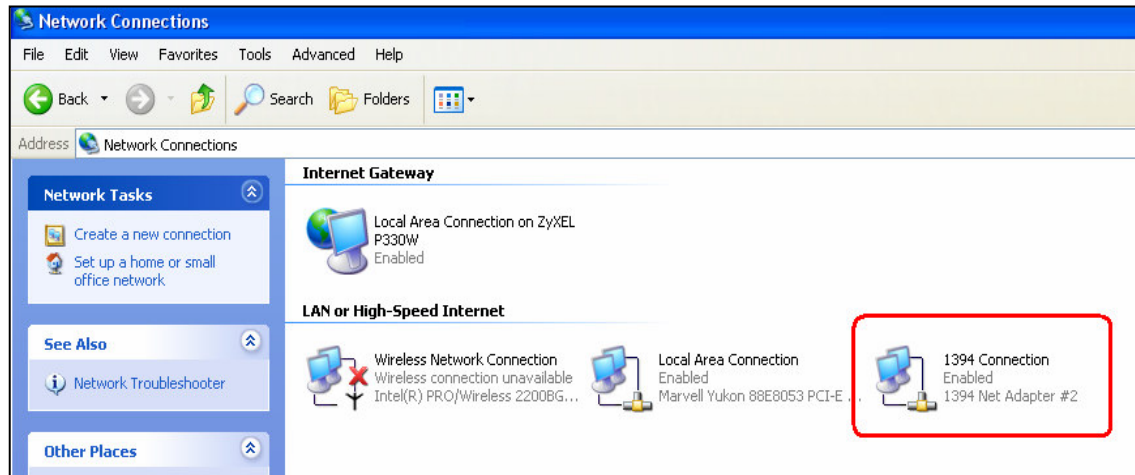


Figure4: 1394 Connection

To verify the speed of 1394a connection. Double Click the 1394 connection, you can find the Speed run with 400 Mbps.



Note:

If your E94A can't run with 400 Mbps. Please use windows update to achieve the newest service pack. But there is a windows issue occur in Windows XP SP2, it will decrease the performance of transmission. Please go to Microsoft web to download the patch and check the information. <http://support.microsoft.com/kb/885222/en-us>

Or you can download another 1394 driver to avoid that. You can go to the unibrain web, and download the driver of ubCore™ 5.0 . Please Check your OS is 32 or 64 bit, and download the applicable version. <http://www.unibrain.com/download/download.asp>

Specifications

Specification	IEEE std 1394a-2000 and IEEE std 1394-1995 ExpressCard standard V1.0 Full x1 PCI Express V1.0a Through Put Max 400Mbps
Host Interface	High-power ExpressCard Socket powered from PC system, no external power needed Suspend power saving mode supported
Dimensions	54mm(W) * 108mm(D) * 5 mm (H)
EMC Certification	FCC Part 15B, Class B, CE EN55022/EN55024
Supported Operating System	Windows 98SE, ME, XP and Windows 2000, Apple Mac OS 8.6 or above (including OS X and beyond)